

ESG

Environmental Social Governance

Your Company Name



[Click here to get the best templates!!](#)

Environmental Social Governance:

- Environmental, Social and Governance (ESG) refers to a set of corporate performance evaluation criteria that assess the sustainability of a company's governance mechanisms and the ability to effectively manage its environmental and social impacts.
- The components of ESG - environment, social and governance have a tendency to have impact on the success of the company and market returns.



[Click here to download the template!!](#)

Corporate Social Responsibility :

- Corporate Social Responsibility is a management concept for companies to integrate social and environmental concerns into their operations and interactions with employees, customers and investors.
- Key CSR issue include :
 - environmental management
 - Eco-efficiency
 - responsible sourcing
 - labour standards and working conditions
 - employee and community relations,
 - social equity, gender balance, human rights
 - good governance
 - and anti-corruption measures.

[Click here to download the template!!](#)



Environmental stewardship :

- The responsible use and protection of the natural environment through conservation and sustainable practices to enhance ecosystem resilience and human well-being (*Chapin et al., 2010*)
- It is important for conserving the natural resources , fighting pollution and protects biodiversity ; aids in maintaining a sustainable environment.

[Click here to download the template!!](#)

Environmental Stewardship, Social Responsibility and Governance Policies for Oil and Gas Industry



This slide showcases environmental, social and governance policies for oil and gas industry that render valuable insights about initiatives that have huge impact on firm's productivity and investment decision - making.

ENVIRONMENTAL STEWARDSHIP



Carbon Emissions Management

- › Energy efficient improvement initiatives to limit flaring, venting and fugitive emissions
- › Emission reduction plans to limit greenhouse gas emissions



Oil Spill Prevention and Management

- › Implementation of tools and processes for effective emergency management of accidental oil spill crisis
- › Site specific emergency response and business continuity plans for oil spill preparedness
- › Collaboration with spill response experts to manage incident, oil spill, air dispersion modeling, toxicology, shipping and salvage

SOCIAL RESPONSIBILITY



Operational Health and Safety

- › Elimination of fatalities, serious illness and injuries at workplace
- › Health and wellness initiatives for employees empowering
- › Ensuring stakeholder engagement and issues management to achieve operational excellence



Development of Human Capital (Health and Education)

- › Health assistance to employees through education, programming and initiatives to enhance capacity and positive behavior change
- › Enhancing health awareness among communities through planned engagements and event participations

CORPORATE GOVERNANCE



Ethics, Transparency and Integrity

- › Transparency ensures reduced corruption and ensures effective and sustainable governance and project sustainability
- › Ensuring ethics and regulation compliance across workplace
- › Focus on working at suitable things with considering law and morality for fulfilling commitments

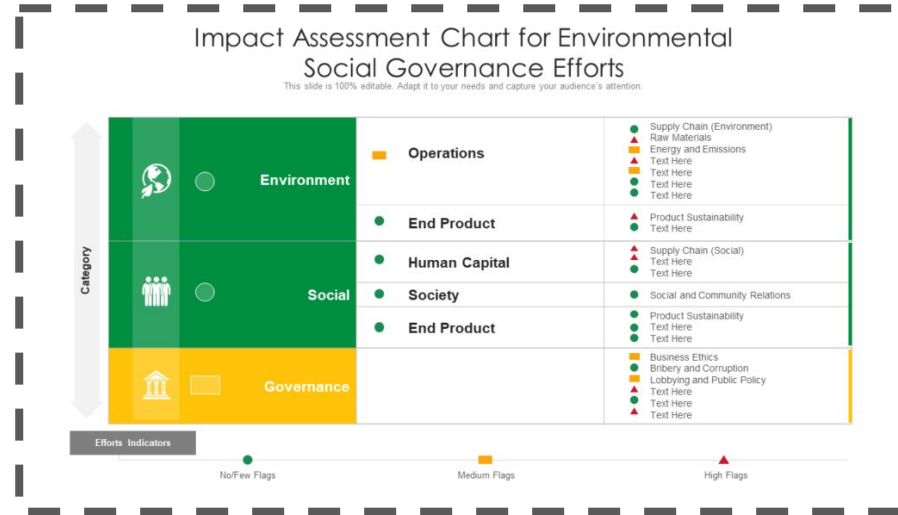


Government Affairs and Political Association

- › Securing ethical standards and compliance with government and local laws/ regulations
- › Employees ensures to have necessary guidance and approvals prior to engagement with government or political events permissible by country's laws and customs
- › Employees require guidance from local Corporate Affairs Manager prior to political event involvement

Human Capital :

- Human capital consists of the knowledge, skills and health that people invest and accumulate throughout their lives to fulfill their potential as productive members of society.
- Knowledge capital , Social capital and emotional capital are the 3 types of Human capital.

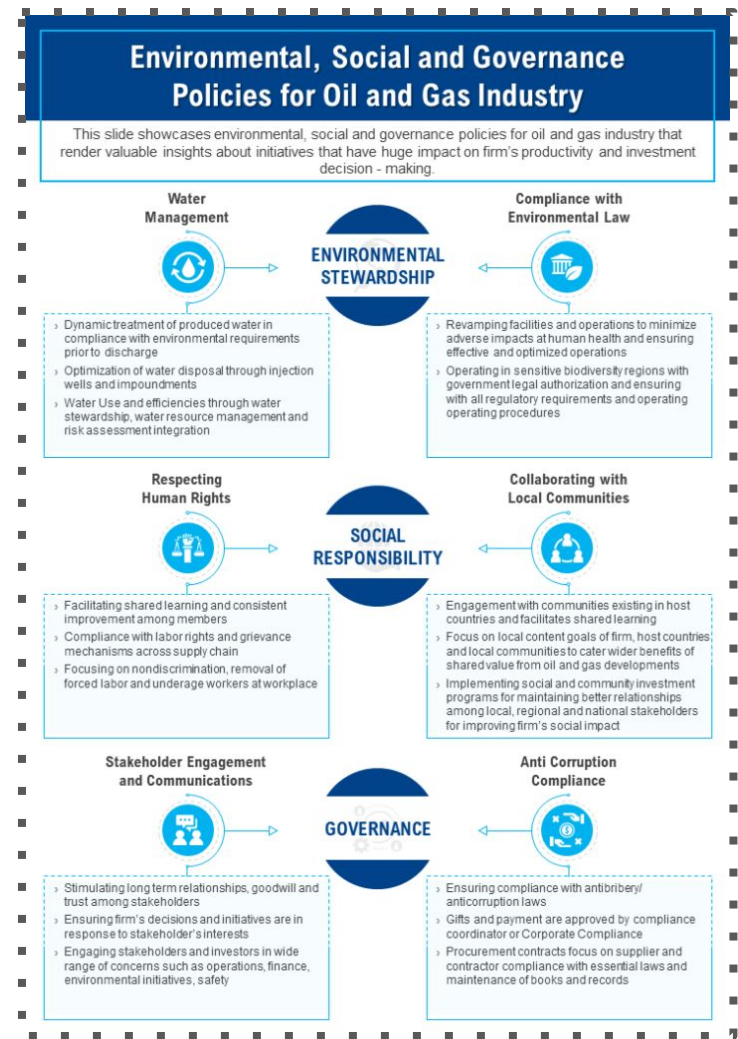


[Click here to download the template!!](#)

Social Responsibility :

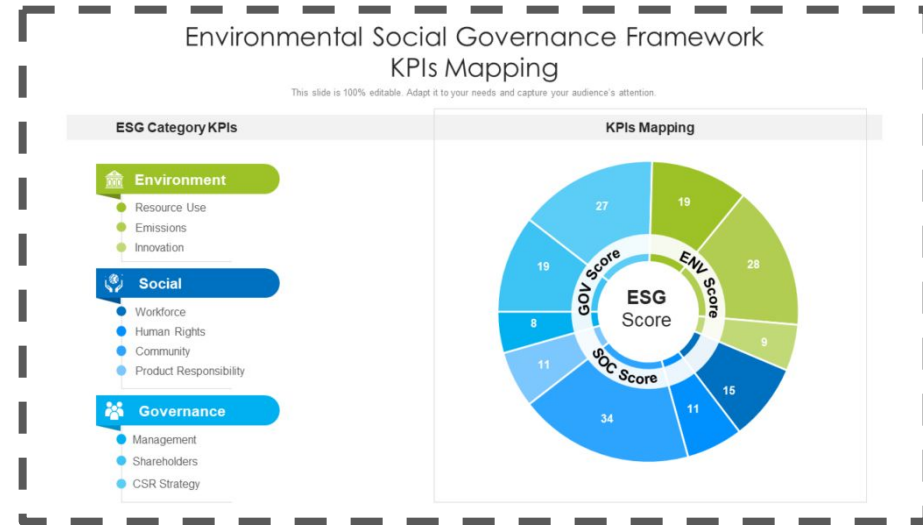
- Social responsibility is the ethical theory that individuals are responsible for their civic duties and that their actions should benefit society as a whole.
- Companies and consumers may both use social responsibility as a platform to positively influence local and international societies.

[Click here to download the template!!](#)



KPIs Mapping:

- You can map KPIs to boundary areas to display you can map KPIs to boundary areas to display in the user interface.
- When you click a boundary area mapped to a KPI on the map or list, the KPI panel displays the top KPI and its sub-KPIs.in the user interface. When you click a boundary area mapped to a KPI on the map or list, the KPI panel displays the top KPI and its sub-KPIs.



[Click here to download the template!!](#)

FAQs

What are the 3 types of KPIs?

- Quantitative indicators
- Qualitative indicators
- Leading indicators

What are the 7 key performance indicators ?

- People skills
- Technical ability
- Quality

[Click here to get the best templates!!](#)

- Engagement
- Energy
- Influence
- Result

What are the main elements of human capital?

- Work experience
- Skills/Educational qualification
- Social and communication skills

- Fame/ Brand image
- Habits and Personality traits

What are the elements of ESG ?

- Decarbonization
- Ethics
- Resource Efficiency
- Equity
- Employability
- Governance

[**Click here to get the best templates!!**](#)

ABOUT US

- SlideTeam is a premier Research, Consulting and Design agency that develops and templatizes industry processes and best practices, frameworks and models across all industry and verticals to help customers present their strategies effectively and convincingly.
- In addition, Slide Team compiles data and statistics from thousands of sources over a wide range of topics to help customers make intelligent decisions. We develop and present our research in the form of fully editable PowerPoint templates to make it easy for our customers to create presentations based on their individual requirements.
- With a large team comprising of Research Analysts, Statisticians, Industry Experts and Designers spread over 6 countries, SlideTeam now hosts the world's largest collection of Ready to Use PowerPoint templates on all topics and industries.
- Our team consists of professionals from Fortune 500 companies and Top Tier consulting firms involved in the process of researching and designing over a million slides that are available for our users on a subscription basis.
- To Contact Us and set up a Live Product Demo join us [here](#) .

[Click here to get the best templates!!](#)