

Logic Model



Logic Model

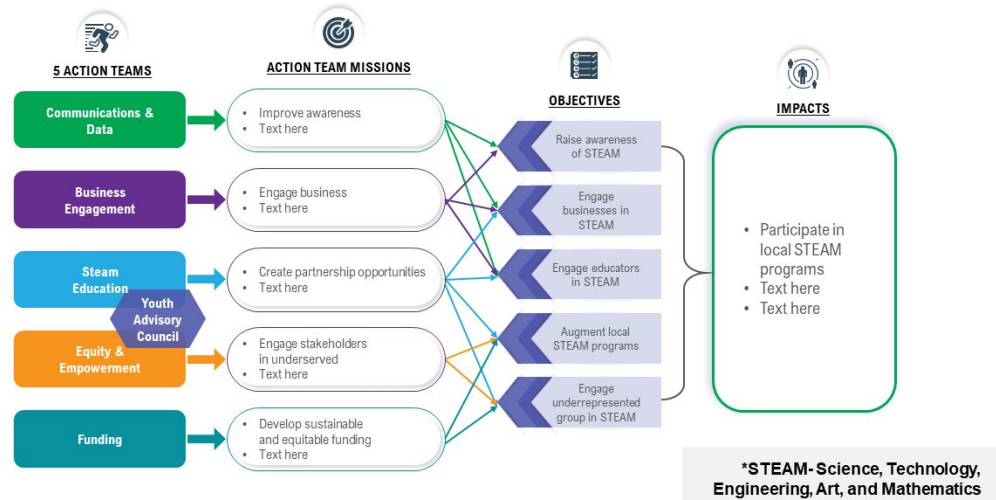
Your Company Name

[Click here to get the best PPT templates!!](#)

- A **logic model** is a visual representation of the relationship between a program's resources, activities, and intended outcomes.
- Logic models demonstrate how interventions affect behaviour and achieve a goal in a clear and concise manner.

Four Components of Logic Model

This slide is 100% editable. Adapt it to your needs and capture your audience's attention.

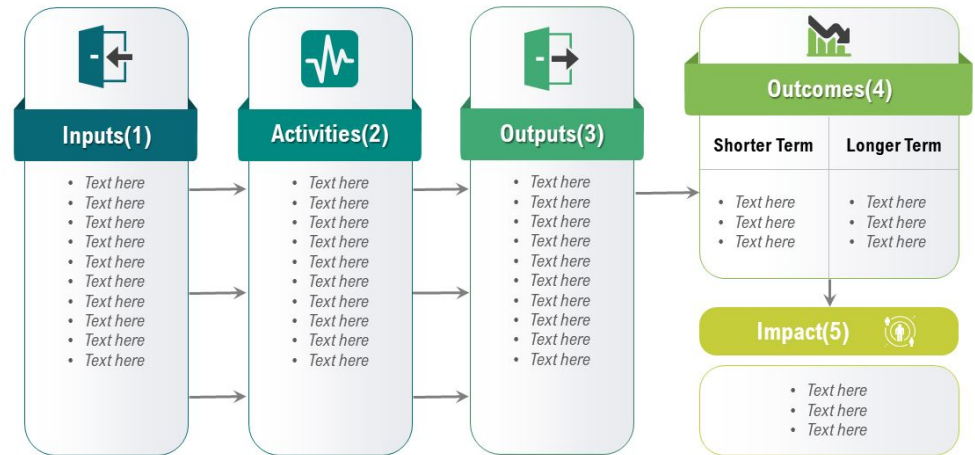


[Click here to get the template!!](#)

- The funds, human resources, and knowledge required by the organisation to engage in the activities or produce the outputs that lead to the desired goals or outcomes are referred to as inputs.

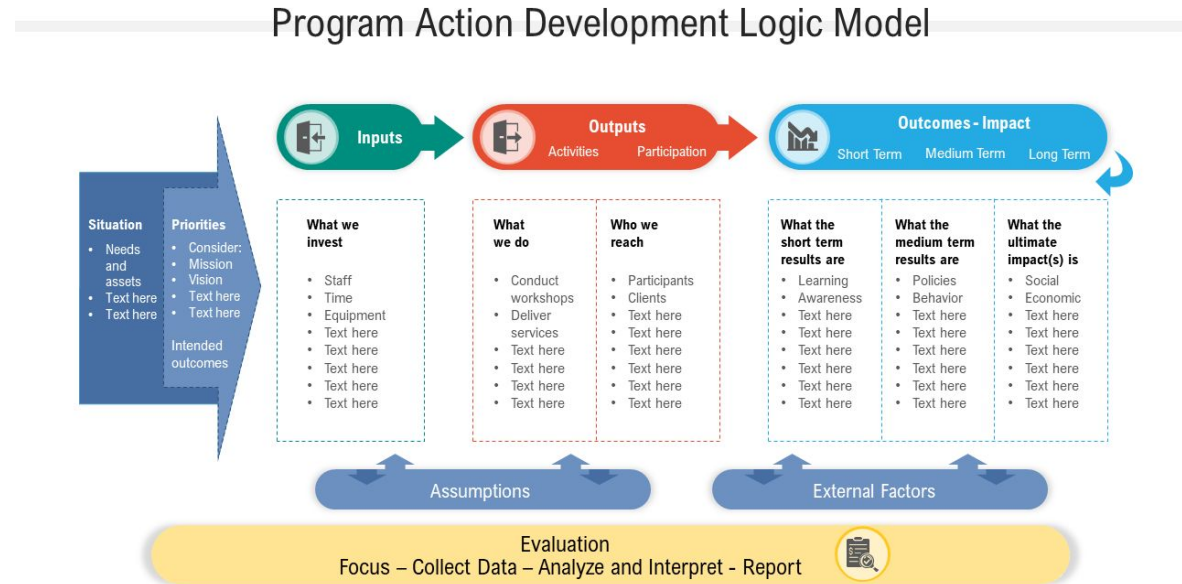
Logic Model with Input and Output

This slide is 100% editable. Adapt it to your need and capture your audience's attention.



[Click here to get the template!!](#)

- Program logic is a thinking, planning and implementation tool that describes and diagrammatically represents how a project, programme or strategy intends to impact social, economic and political development in a given country, region or context.

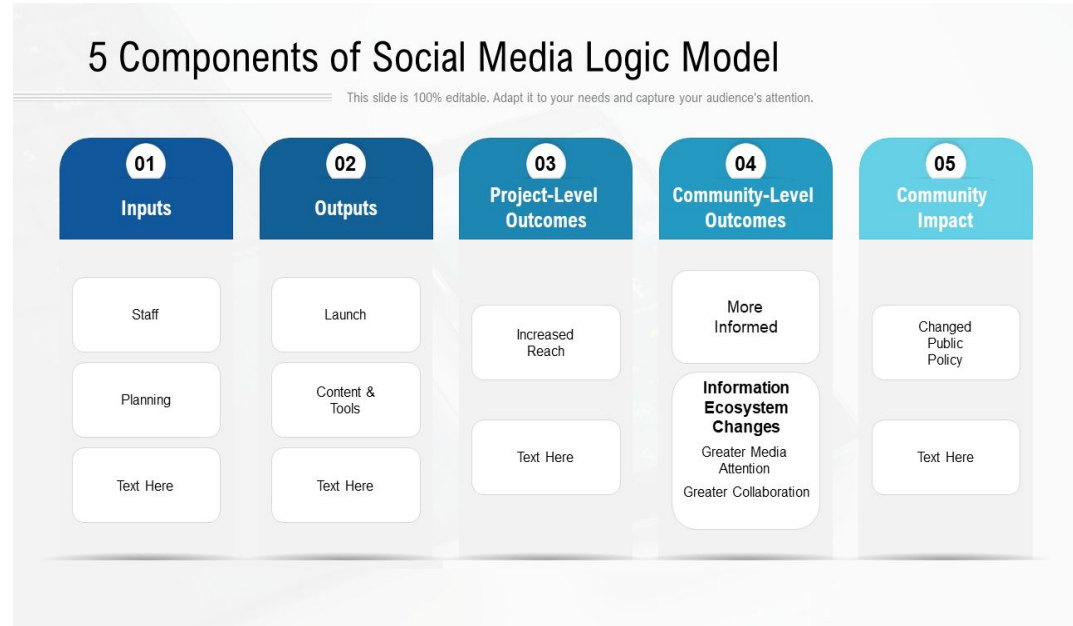


[Click here to get the template!!](#)

The four elements of social media logic ;

- Programmability
- Popularity
- Connectivity
- Datafication

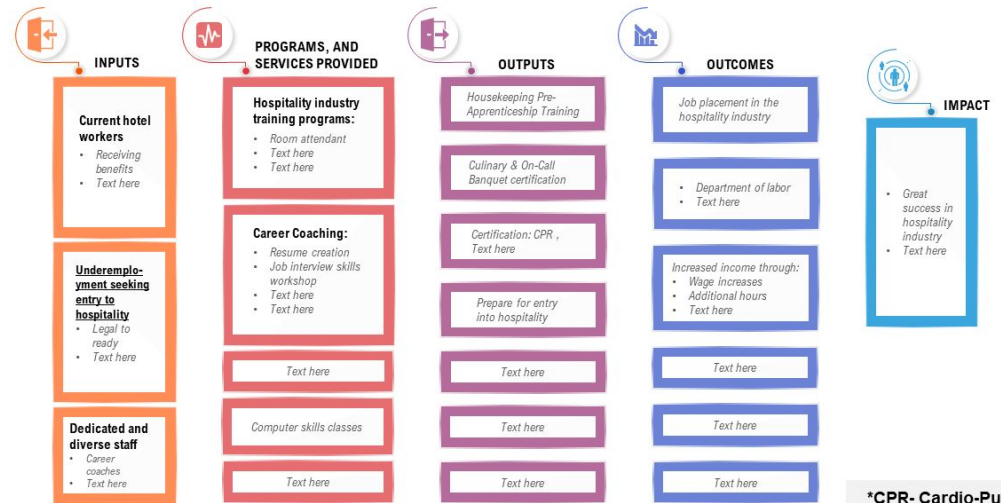
are critical in understanding how social interaction is mediated in a networked society by an intricate dynamic of mass media, social media platforms, and offline institutional processes.



[Click here to get the template!!](#)

- Employees in any field of the **Hospitality industry** can benefit from hospitality training.
- Hotels, restaurants, travel and tourism establishments, bars, and many other industries are included.

Best Hospitality Training Logic Model



*CPR- Cardio-Pulmonary Resuscitation

[Click here to get the template!!](#)

FAQs

What are the logic model's main components?

While a basic logic model should include :

- The basic components of participants
- Inputs
- Activities
- Outputs
- Outcomes , this is where the similarities end.

[Click here to get the best PPT templates!!](#)

What is the fundamental principle of a logic model?

- A logic model is a graphical representation of the relationship between a program's resources, activities, and intended outcomes.
- Logic models demonstrate how interventions influence behaviour and achieve a goal in a clear and concise manner.

[Click here to get the best PPT templates!!](#)

What stages of logical model development are there?

Step 1: Gather useful information.

Step 2: Evaluate your resources and capacity.

Step 3: Involve the people involved in your project.

Step 4: Create a plan, solicit feedback, and revise it.

[Click here to get the best PPT templates!!](#)

About Us

- SlideTeam is a premier Research, Consulting and Design agency that develops and templatizes industry processes and best practices, frameworks and models across all industry and verticals to help customers present their strategies effectively and convincingly.
- In addition, Slide Team compiles data and statistics from thousands of sources over a wide range of topics to help customers make intelligent decisions. We develop and present our research in the form of fully editable PowerPoint templates to make it easy for our customers to create presentations based on their individual requirements.
- With a large team comprising of Research Analysts, Statisticians, Industry Experts and Designers spread over 6 countries, SlideTeam now hosts the world's largest collection of Ready to Use PowerPoint templates on all topics and industries.
- Our team consists of professionals from Fortune 500 companies and Top Tier consulting firms involved in the process of researching and designing over a million slides that are available for our users on a subscription basis.
- To Contact Us and set up a Live Product Demo join us [here](#) .

[Click here to get the best PPT templates!!](#)