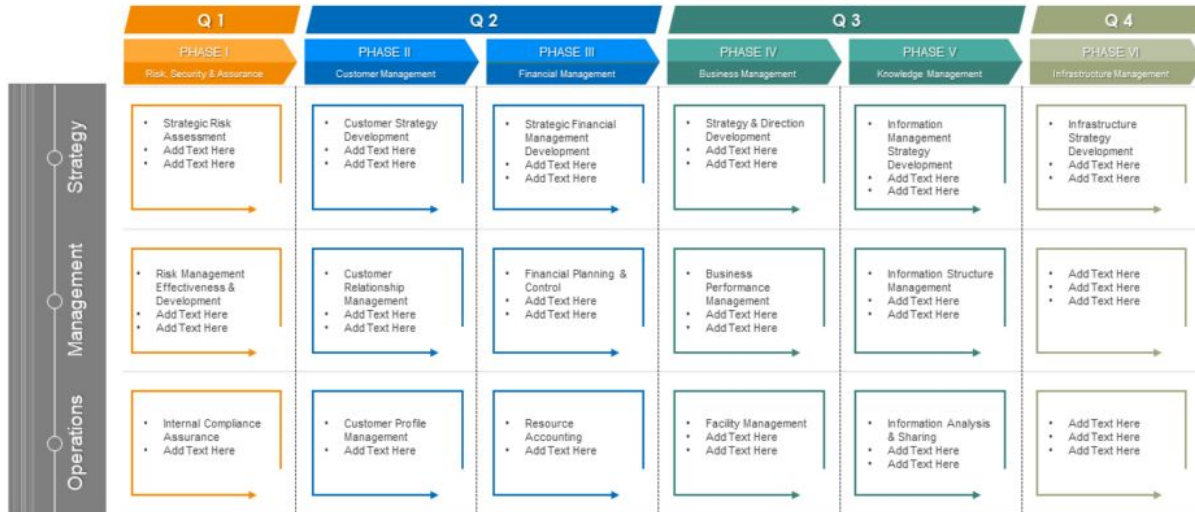


Enterprise Architecture Roadmap

Quarterly Business Capability Modeling Roadmap based on Enterprise Architecture

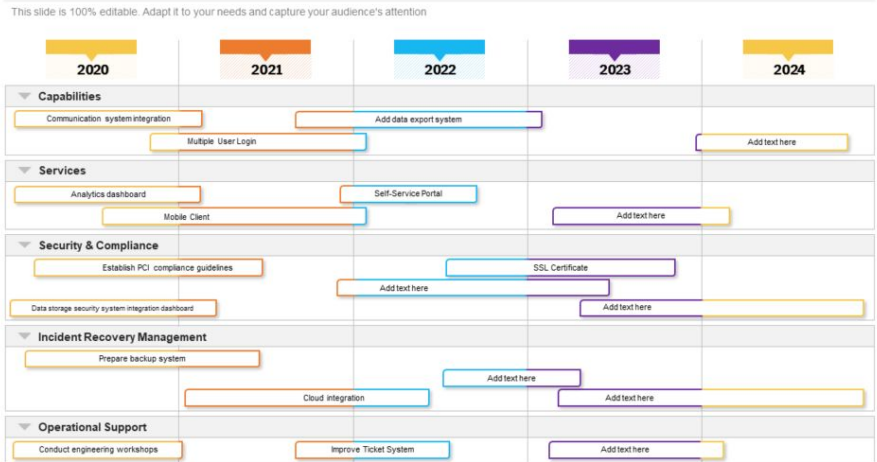


This slide is 100% editable. Adapt it to your needs and capture your audience's attention.

[Click here to get the best PPT templates!!](#)

- A conceptual blueprint that defines the structure and operation of organisations is known as an **enterprise architecture (EA)**.
- The aim of enterprise architecture is to determine how an organisation can achieve its current and future goals effectively.

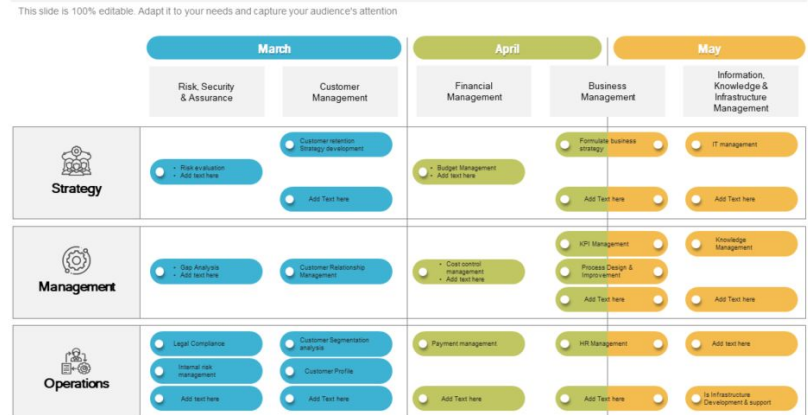
Five Years Roadmap of an Enterprise Architecture with Ticket System Improvement Purpose



[Click here to get the PPT template!!](#)

- **An enterprise architecture roadmap** is a strategic blueprint that explains how a company's IT plans will help it achieve its business goals.

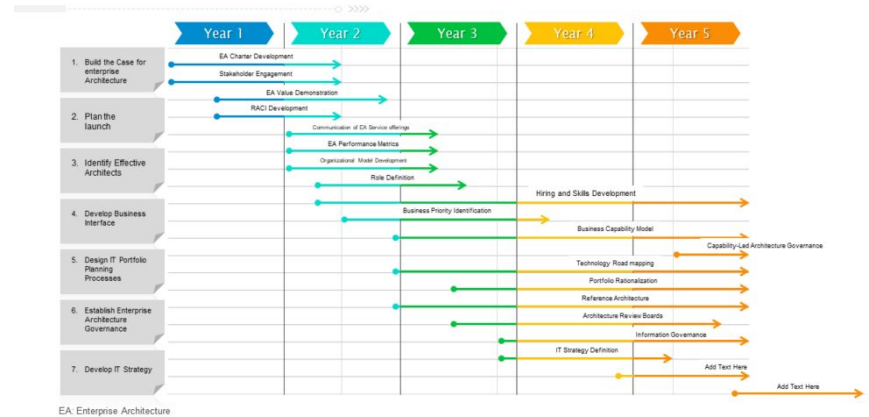
Three Months Roadmap of an Enterprise Highlighting Architecture Planning Purpose



[Click here to get the PPT template!!](#)

- **The goal of enterprise architecture is to develop a map of IT assets and business processes, as well as a set of governing principles that will drive an open conversation about corporate strategy and how it can be conveyed through IT.**

Five Yearly Strategic IT Enterprise Architecture Roadmap



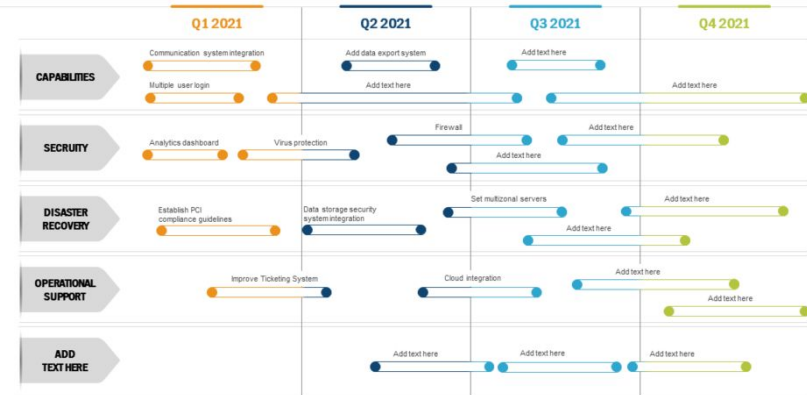
This slide is 100% editable. Adapt it to your needs and capture your audience's attention.

[Click here to get the PPT template!!](#)

- Organizations can use **enterprise architecture (EA)** tools to assess both the need for and the effect of transformation.
- They encapsulate the interdependence and interdependence of an ecosystem of partners, operating models, capabilities, people, processes, knowledge, applications, and innovations.

Enterprise Architecture Quarterly Roadmap highlighting Purpose of an IT Organization

This slide is 100% editable. Adapt it to your needs and capture your audience's attention



[Click here to get the PPT template!!](#)

TOGAF (The Open Group Architecture Framework):

TOGAF defines principles for

- Enterprise IT architecture design
- Planning
- Implementation
- Governance.

Quarterly Roadmap to Develop Enterprise Technology Architecture

This slide is 100% editable. Adapt it to your need and capture your audience's attention.



EA: Enterprise Architecture

[Click here to get the PPT template!!](#)

- Processes to identify, develop or acquire, implement, and integrate IT solutions into business processes are included in the **acquisition and implementation** domain.
- Once installed, procedures for maintaining and managing changes to existing systems must be in place.

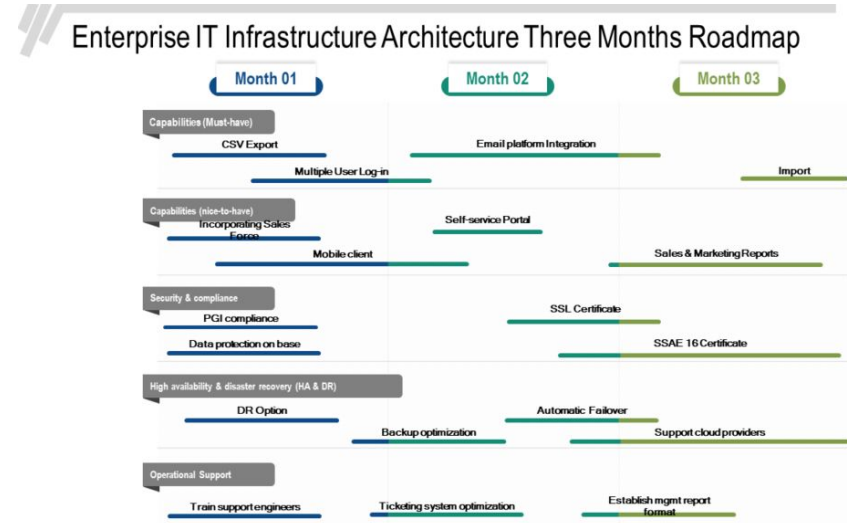
Five Yearly IT Enterprise Architecture Process Roadmap

		Year 1	Year 2	Year 3	Year 4	Year 5
STRATEGIES	Planning & Organization	Define Strategy and tactics for IT contribution				
		Define Business Objectives				
		Technological Infrastructure Organization				
	Acquisition & Implementation	Add Text Here				
		Add Text Here				
		Realization of IT Strategy				
		Solutions Integration into business processes				
		Add Text Here				
		Add Text Here				
	Delivery & Support	Actual Delivery of required Services				
		Establishment of support processes				
		Conduct regular assessment of all IT processes				
		Add Text Here				

This slide is 100% editable. Adapt it to your needs and capture your audience's attention.

[Click here to get the PPT template!!](#)

- Backup optimization skips file backups in certain circumstances if the same file or a version of the same file has already been backed up.
- "**Backup Optimization**" contains complete details on the backup optimization algorithm.



[Click here to get the PPT template!!](#)

FAQs

What are the essential components of Enterprise Architecture?

- Governance of Enterprise Architecture.
- Framework for Enterprise Architecture.
- Methodology.
- Artifacts.
- Standards.
- Best Practices in Enterprise Architecture.

[Click here to get the best PPT templates!!](#)

Why is IT referred to as enterprise architecture?

- The goal of enterprise architecture is to determine how an organisation can achieve its current and future goals effectively.
- The practise of analysing, planning, designing, and eventually implementing analysis on an enterprise is referred to as enterprise architecture.

What are the different kinds of enterprise architecture?

- Comprehensive, Industry, and Domain frameworks are the three types of Enterprise Architecture Frameworks.

What are the three most important components of IT infrastructure?

- Hardware.
- Software.
- Networking.

About Us

- SlideTeam is a premier Research, Consulting and Design agency that develops and templatises industry processes and best practices, frameworks and models across all industry and verticals to help customers present their strategies effectively and convincingly.
- In addition, Slide Team compiles data and statistics from thousands of sources over a wide range of topics to help customers make intelligent decisions. We develop and present our research in the form of fully editable PowerPoint templates to make it easy for our customers to create presentations based on their individual requirements.
- With a large team comprising of Research Analysts, Statisticians, Industry Experts and Designers spread over 6 countries, SlideTeam now hosts the world's largest collection of Ready to Use PowerPoint templates on all topics and industries.
- Our team consists of professionals from Fortune 500 companies and Top Tier consulting firms involved in the process of researching and designing over a million slides that are available for our users on a subscription basis.
- To Contact Us and set up a Live Product Demo join us [here](#) .

[Click here to get the best PPT templates!!](#)