

CSR Matrix

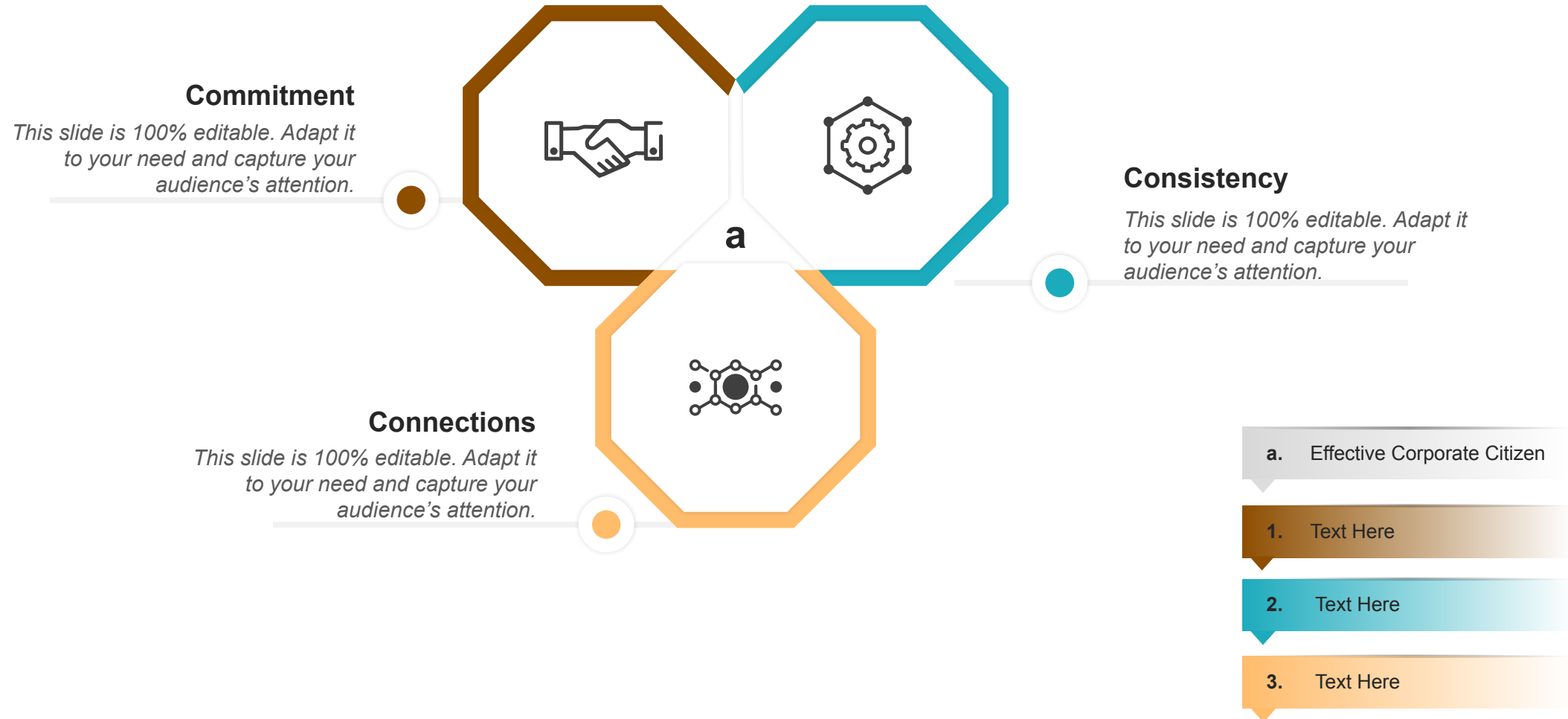


Your Company Name



[Click here to get the best PPT templates!!](#)

3 C's Model for Corporate Social Responsibility



[Click here to get the PPT template!!](#)

4 Areas Governed by Corporate Social Responsibility



[Click here to get the PPT template!!](#)

Different Area for Implying CSR Activities by Organization

This slide is 100% editable. Adapt it to your need and capture your audience's attention.

Community

- Social Accountability and Social Investment
- Text Here

Environment

- Environment Protection and Sustainability
- Text Here



Workplace

- Ethics and Human Resources
- Text Here

Marketplace




- Corporate Governance and Economic Responsibility
- Text Here

Click here to get the PPT template!!

- **Corporate social responsibility** and ethical leadership extend beyond simply managing the company's day-to-day operations.
- **Corporate governance**, as a whole, is concerned with how a corporation guarantees that all of its policies and processes are ethically sound.

CSR Framework with Initiatives Aligned with SDGs

This slide covers details about CSR framework that comprises of CSR initiatives that firm is planning to perform in next financial period and it depicts the alignment of each initiative with sustainable development goals(SDGs).

Initiative	SDG Alignment	Aim	KPI	Scope	2020		2021
					Target	Results	Target
Deliver high quality products and services		Product quality improvement to cater customer needs across the globe	<ul style="list-style-type: none"> › Maintain ISO9001 certification standard for all production facilities › Defects in products and services 	<ul style="list-style-type: none"> › Global › US 	<ul style="list-style-type: none"> › Maintain Certification › 45% or less 	<ul style="list-style-type: none"> › Maintain Certification › 50% or less 	<ul style="list-style-type: none"> › Maintain Certification › 43% or less
Nurture trust relationship with vendors		CSR procurement in supply chain	<ul style="list-style-type: none"> › Percentage of vendors contacted 	<ul style="list-style-type: none"> › US 	<ul style="list-style-type: none"> › Visitation rate – 35% 	<ul style="list-style-type: none"> › Visitation rate – 25% 	<ul style="list-style-type: none"> › Visitation rate – 45%
Risk management reinforcement		Ensuring compliance	<ul style="list-style-type: none"> › Maintaining compliance initiatives › Compliance training and compliance educational programs 	<ul style="list-style-type: none"> › Global › US 	<ul style="list-style-type: none"> › Compliance enhancement system › Number training programs organized - 15 	<ul style="list-style-type: none"> › Implementation of personal information measures › Number training programs organized - 14 	<ul style="list-style-type: none"> › Continuous compliance system operation › Number training programs organized - 16
Add text here	Add text here	Add text here	› Add text here	› Add text here	› Add text here	› Add text here	› Add text here
Add text here	Add text here	Add text here	› Add text here	› Add text here	› Add text here	› Add text here	› Add text here





This slide is 100% editable. Adapt it to your needs and capture your audience's attention.



→ **CSR, or corporate social responsibility**, is a type of self-regulation that represents a company's accountability and commitment to contribute to the well-being of communities and society through different environmental and social measures.

Analysing Different CSR Instruments

This slide provides information regarding different CSR instruments that are determined on certain key characteristics such as purpose, applicability and role.

		OECD Guidelines for Multinational Enterprises	ISO 26000 Guidance	UN Global Impact
	Parameters			
	Purpose	Adhere responsible business conduct	Sustainable development contribution	Encourage business to adopt sustainable and socially responsible practices and policies
	Applicability	Multinational enterprises operating in OECD member countries	Cater all types of organizations in public, private, nonprofit segments	Participants include businesses, civil society, associations, trade unions, public sector organizations, etc.
	Role	<ul style="list-style-type: none"> › Recommendations(non – binding)to multinational enterprises from government › Build National Contact Point(NCP)to promote guidelines and handling complaints 	Guidance on CR policies implementation	Participants in global compact implement 10 principles of UN Global Compact related to human rights, labor, anti – corruption and environment protection

This slide is 100% editable. Adapt it to your needs and capture your audience's attention.

→ The Chief **Sustainability Officer** will collaborate with managers, employees, customers, and shareholders to address the organisation's attitude to environmental responsibility in order to reduce the company's environmental effect.

Roles and Responsibilities Assigned for Effective CSR

This slide provides information roles and responsibilities assigned to people involved in CSR activities and its implementation. It will also provide details about the frequency of board meeting to handle CSR related issues.





Position of Person	Responsibility	Reporting Frequency to board regarding CSR Related Issues
Chief Sustainability Officer	Management and assessment of CSR related risks and Opportunities	Quarterly
Chief Financial Officer	Addressing CSR related Finances	Quarterly
Sustainability Officer	Add text here	Add text here
Add text here	Add text here	Add text here
Add text here	Add text here	Add text here
Add text here	Add text here	Add text here

This slide is 100% editable. Adapt it to your needs and capture your audience's attention.



Creating a CSR strategy framework:

- Establish an ethical code.
- Determine how your organisation will make a difference.
- Obtain support for your CSR plan.
- Set quarterly CSR objectives.
- Create a way to track the impact of CSR.

CSR Activities Spend for Financial Year 2019 - 2020

This slide provides information regarding the expenditure made by firm on CSR initiatives. It provides information regarding projected budget, amount spent on different CSR activities and their respective sector catered.

Identified CSR Activity	Catered Sector	Program Location (Local, Specific Area)	Projected Budget	Amount Spent	Cumulative Expenditure till reporting period	Budget Spent- Direct/ through Implemented Agency
Contributions to local communities	Rural development	Local, Seattle	1.5MM	1.5MM	1.5MM	Direct
Medical facility development	Promoting health sector	Local, Seattle	750,000	745,000	745,000	Through Implemented Agency Agency 1 registered in 2005 under Trust Act
Add text here	Add text here	Add text here	Add text here	Add text here	Add text here	Add text here
Add text here	Add text here	Add text here	Add text here	Add text here	Add text here	Add text here
Add text here	Add text here	Add text here	Add text here	Add text here	Add text here	Add text here

This slide is 100% editable. Adapt it to your needs and capture your audience's attention.

FAQs

What are the four types of corporate social responsibilities?

→ Environmental responsibility, ethical/human rights duty, philanthropic responsibility, and economic responsibility are the four broad categories of CSR.

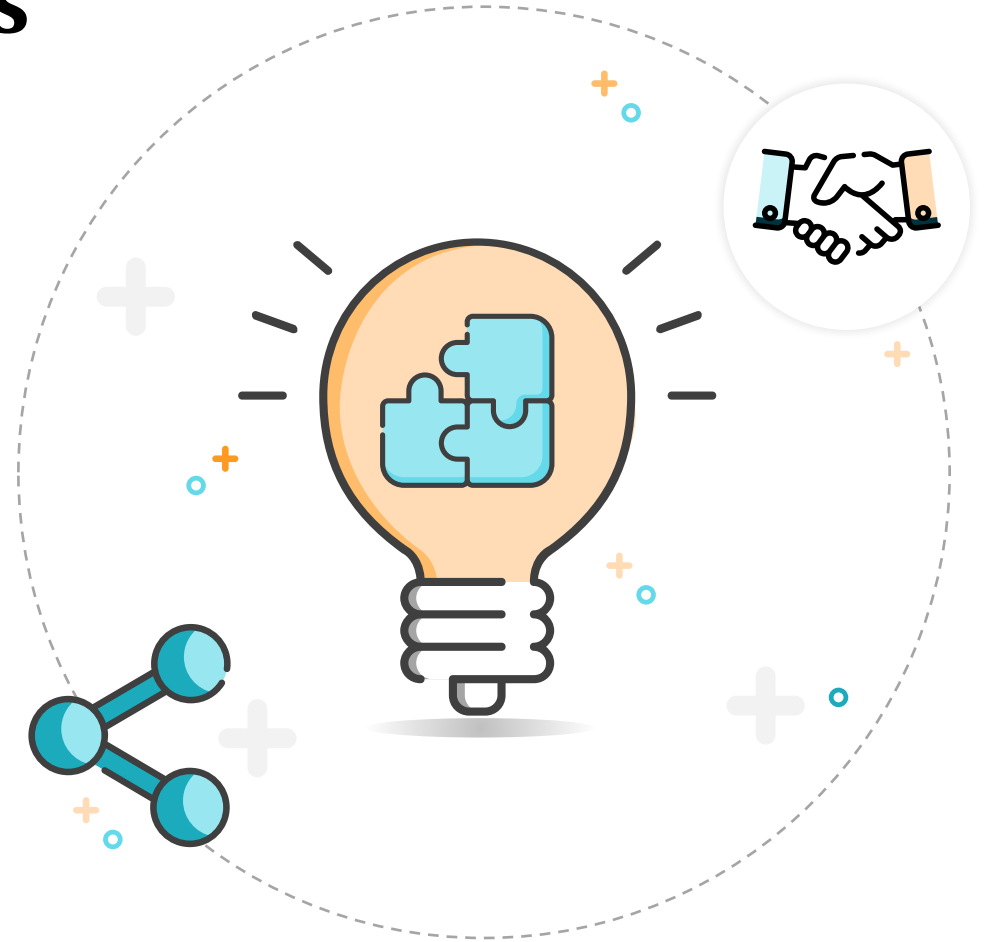


[Click here to get the best PPT templates!!](#)

FAQs

What is the significance of CSR?

- Social responsibility programmes can raise employee morale in the workplace and lead to increased productivity, which has an impact on the company's profitability.
- Social responsibility activities implemented by businesses can boost consumer retention and loyalty.

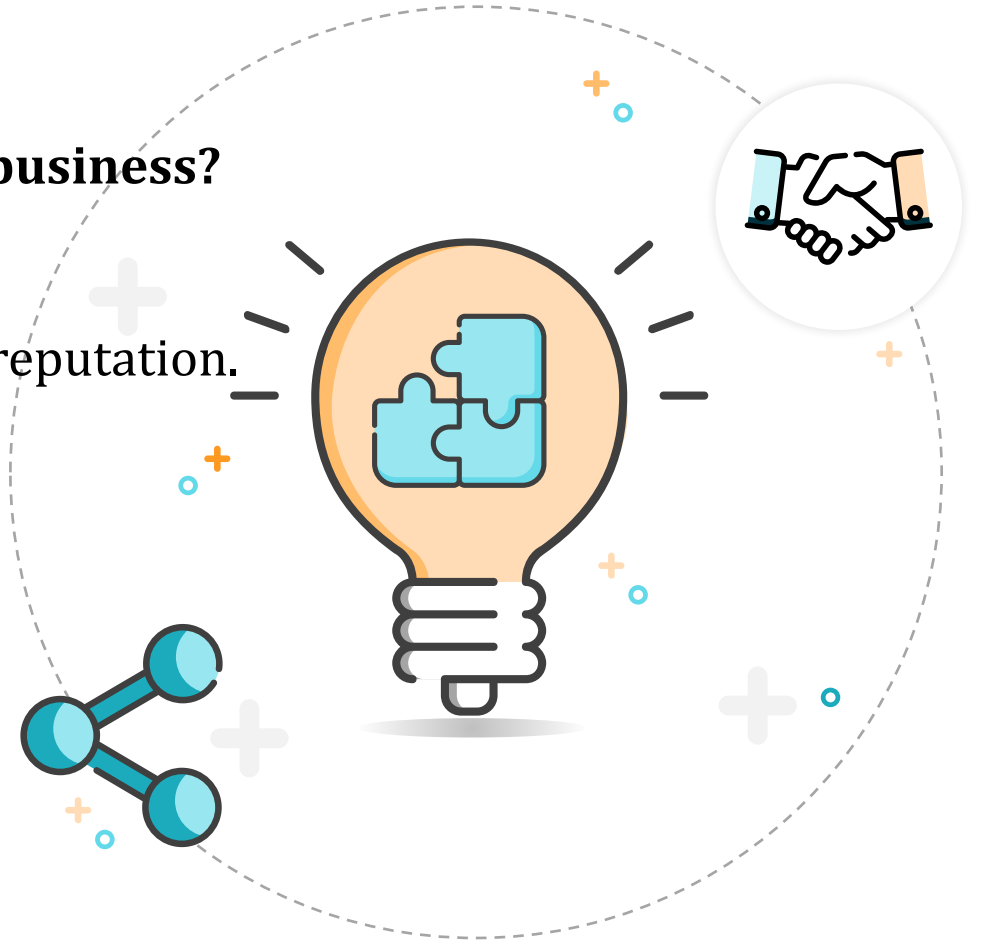


[Click here to get the best PPT templates!!](#)

FAQs

What are the three benefits of incorporating CSR into business?

- Improved brand recognition; and a positive company reputation.
- Sales and consumer loyalty have increased.
- Operating expenses savings.
- Improved financial performance.
- Higher capacity to attract and retain talent.
- Organizational expansion.
- Access to capital is made easier.



[Click here to get the best PPT templates!!](#)

- SlideTeam is a premier Research, Consulting and Design agency that develops and templatizes industry processes and best practices, frameworks and models across all industry and verticals to help customers present their strategies effectively and convincingly.
- In addition, Slide Team compiles data and statistics from thousands of sources over a wide range of topics to help customers make intelligent decisions. We develop and present our research in the form of fully editable PowerPoint templates to make it easy for our customers to create presentations based on their individual requirements.
- With a large team comprising of Research Analysts, Statisticians, Industry Experts and Designers spread over 6 countries, SlideTeam now hosts the world's largest collection of Ready to Use PowerPoint templates on all topics and industries.
- Our team consists of professionals from Fortune 500 companies and Top Tier consulting firms involved in the process of researching and designing over a million slides that are available for our users on a subscription basis.
- To Contact Us and set up a Live Product Demo join us [here](#) .

About Us

Click here to get the best PPT templates!!