

Work Breakdown Structure



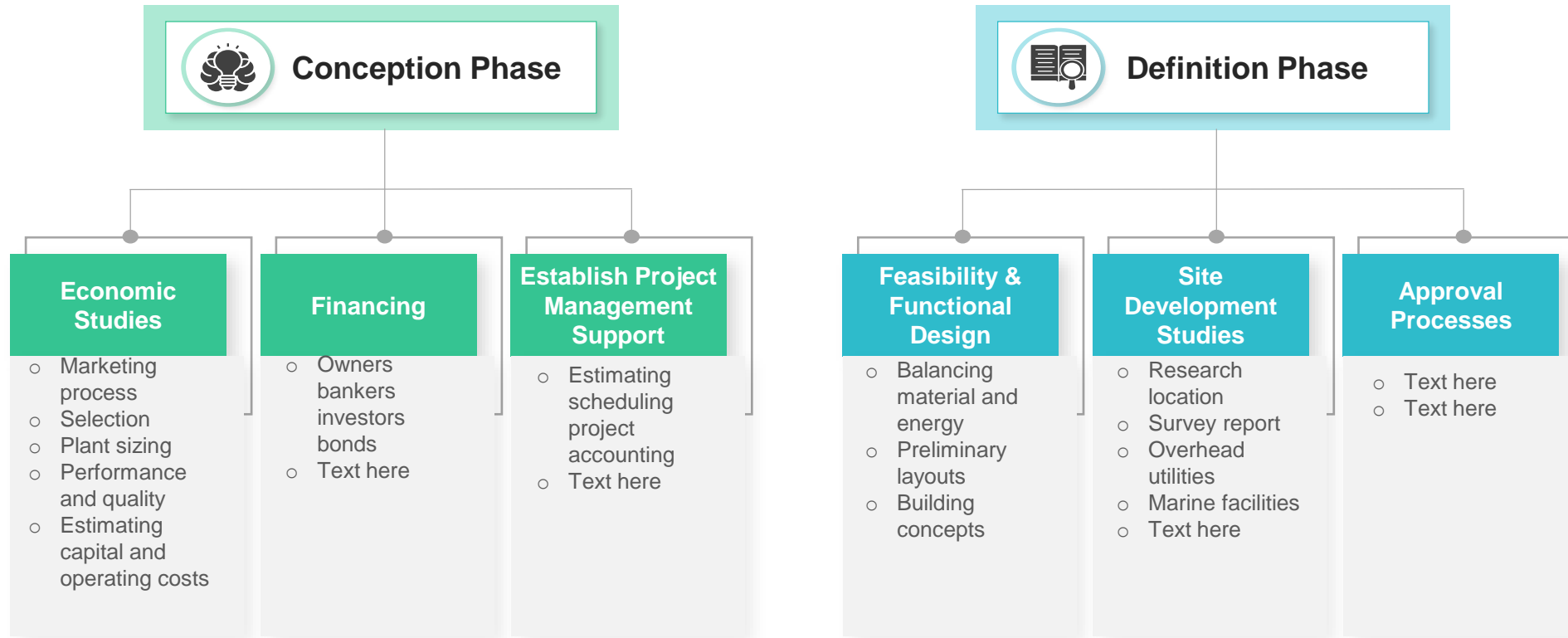
A work breakdown structure (WBS) is a visual, hierarchical, deliverable-oriented project deconstruction. It is a useful diagram for project managers because it allows them to break down the scope of their projects and visualise all of the tasks required to complete them.

The work breakdown structure chart outlines all project work steps, making it an essential project planning tool. Once the work is distributed into segments, organizations can also ensure that the right team is doing it. Such attention to detail results in fabulous, positive results across businesses.

Work Breakdown Structure

Key Phases of Work Breakdown Structure

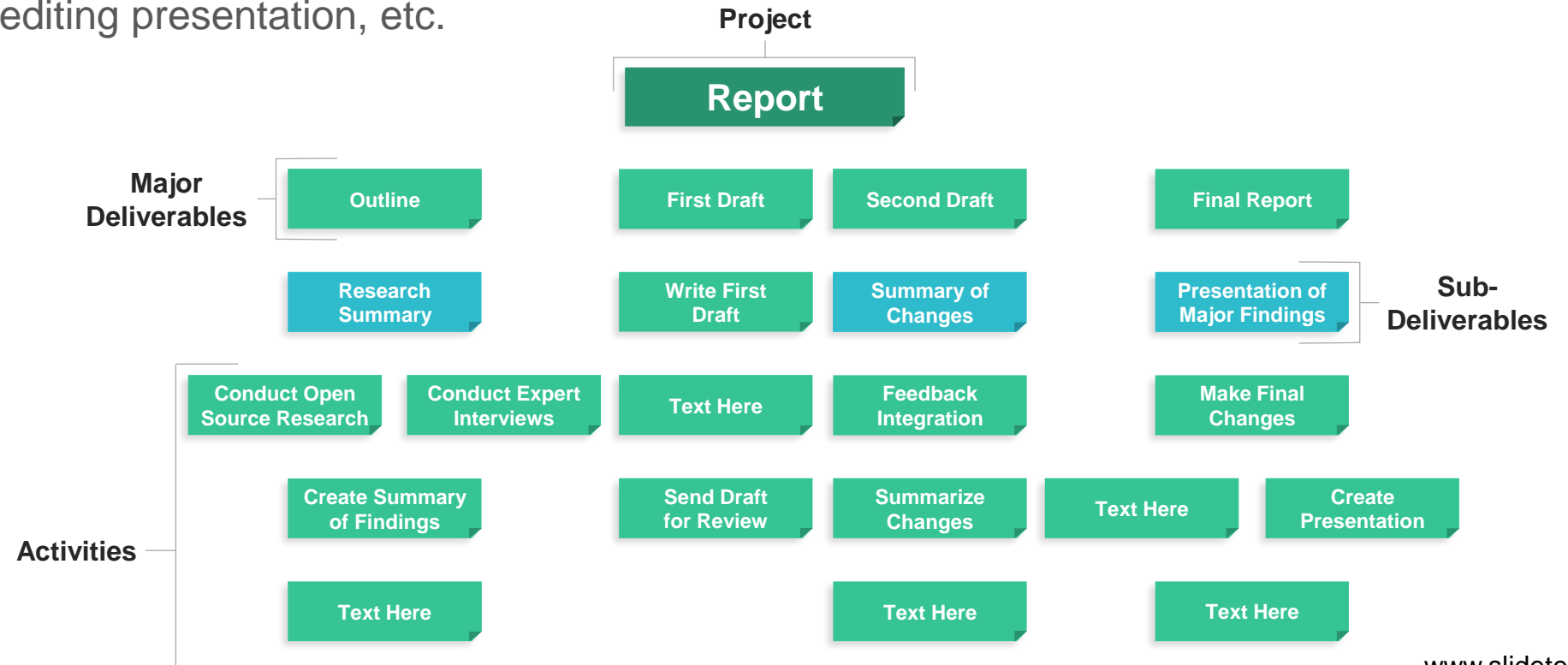
This slide shows the work breakdown structure with conception and definition phase which covers economic studies, financing, establishing project Management support, functional design, site development studies, approval processes, etc. It will act as a roadmap to guide you to completion of what would seem to be a very complicated project scope. However, when broken down with a WBS, project planning, scheduling and resource planning suddenly become much more manageable.



Work Breakdown Structure to Start Project



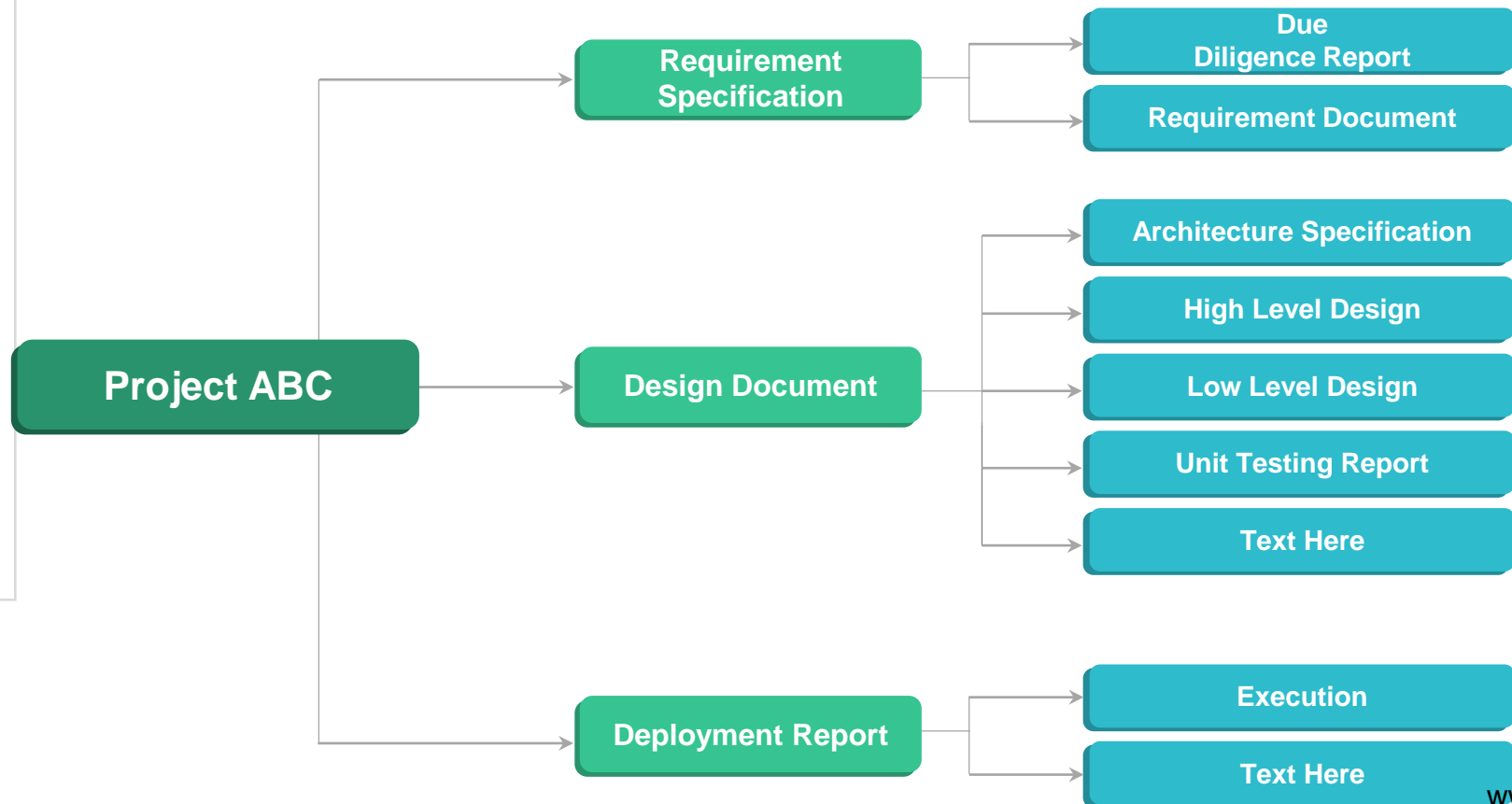
This provides an outline view with a list of work packages, tasks and deliverables. It's probably the simplest method to make a WBS, which is sometimes all you need. This slide shows the work breakdown structure to start new project which focuses on project report that includes outlining, drafting, reporting, summary research, writing first draft, presenting major findings, sending draft for review, editing presentation, etc.

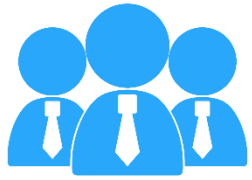


[CLICK HERE TO DOWNLOAD THIS TEMPLATE IN EDITABLE PPT FORMAT](#)

Work Breakdown Structure with Deployment Report

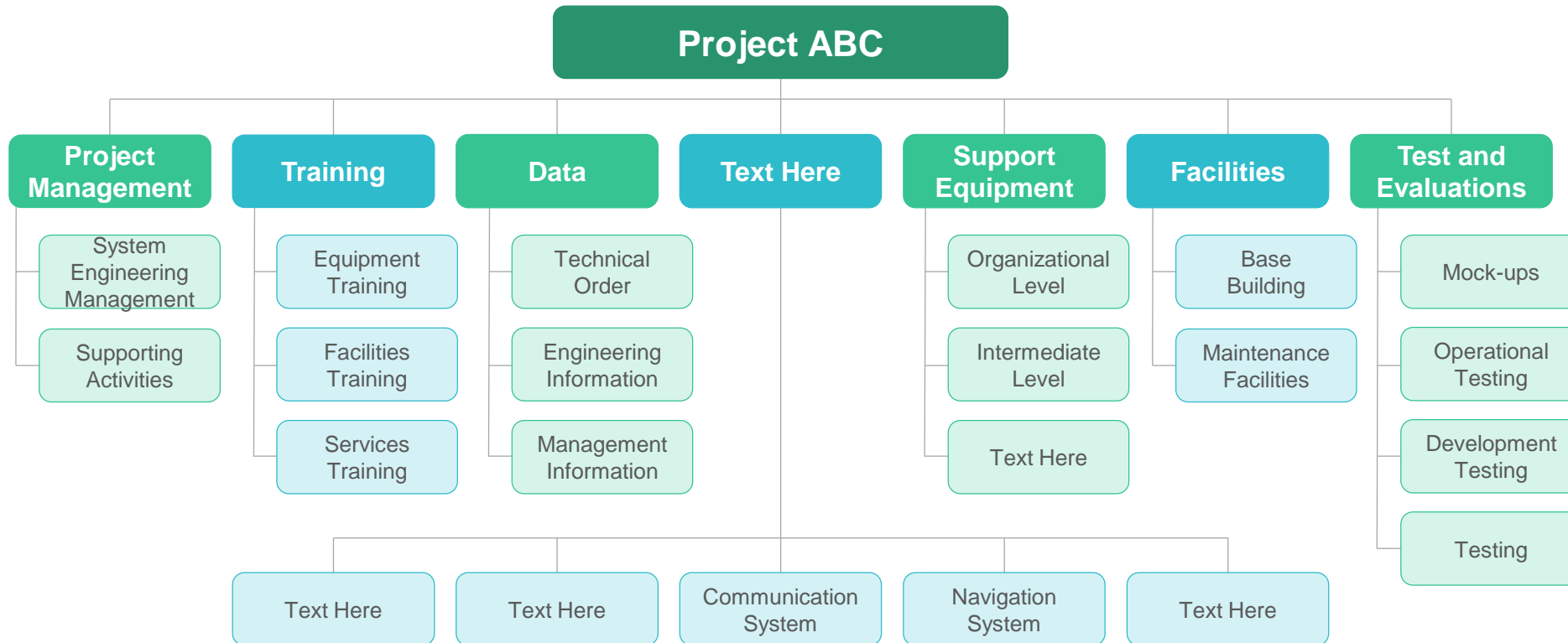
Break the larger project scope statement into a series of phases that will take it from conception to completion. You can also create control accounts, which are task categories for different work areas you want to keep track of. Focus on requirement specification, document designing, deployment report with due diligence report, architecture specification, unit testing report, plan execution, etc to assemble the final project.





Slide Work Breakdown Structure with Major Deliverables Team

This organizational chart has all the major WBS deliverable to focus your energy on. The key elements are project management, training, data, support equipment, facilities, test and evaluation with system engineering management, supporting activities, equipment, facilities and services training, technical orders, etc.



[CLICK HERE TO DOWNLOAD THIS TEMPLATE IN EDITABLE PPT FORMAT](#)

WBS for IT Project

The goal of a WBS in IT Project is to make a large project more manageable. Breaking it down into smaller chunks means work can be done simultaneously by different team members, leading to better team productivity and easier project management.



Project Name:
Department:
Focus Area:
Product/Process:

Project ABC
Information Technology
Text Here
Sitemap

Prepared By

Document Owner (s)

Robin Smith

John Foe

Text here

Project/Organization Role

Developing project schedule

IT Resource planning

Text here

Project Closure Report Version Control

Version

Date

Author

Change Description

1.1

MM/DD/YYYY

John Foe

Creating document

1.2

MM/DD/YYYY

Mike Mackay

Creating closeout report of IT project

Text here

Text here

Text here

Text here



WBS for Market Research Project

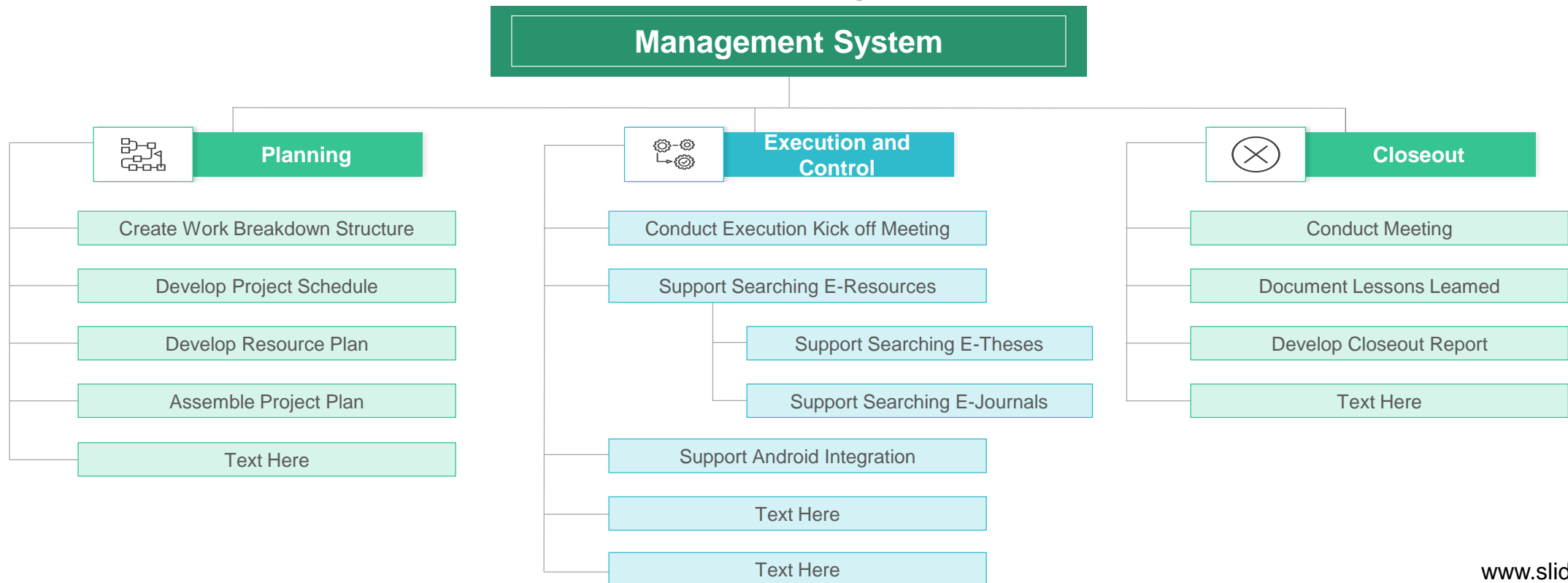
It simplifies the communication of what needs to be done in a complex project very well. This, in turn, makes it easier to ask for help and allocate resources, it makes it easier to break down the work packets into activity lists – and then a schedule. For market research project, focus on description, assigned person, start and end date that covers three stages which includes data collection, site selection, contract confirmation, supplier selection, etc.

Level	WBS	Description	Assigned To	Start Date	End Date	Notes
1	1	Stage 1	Sr. Manager	mm/dd/20XX	mm/dd/20XX	
2	1.1	Data collection and briefing	Manager	mm/dd/20XX	mm/dd/20XX	Text here
2	1.2	Site selection	Manager	mm/dd/20XX	mm/dd/20XX	Text here
3	1.2.1	Key partners identification	Assistant Manager	mm/dd/20XX	mm/dd/20XX	Text here
4	1.2.1.1	Contract confirmation	Analyst	mm/dd/20XX	mm/dd/20XX	Text here
4	1.2.1.2	Text here	Analyst	mm/dd/20XX	mm/dd/20XX	Text here
1	2	Stage 2	Project Engineer			
2	2.1	Drawing technical designs	Senior Engineer	mm/dd/20XX	mm/dd/20XX	Text here
3	2.1.1	Licensing applications	Junior Engineer	mm/dd/20XX	mm/dd/20XX	Text here
3	2.1.2	Text here	Junior Engineer	mm/dd/20XX	mm/dd/20XX	Text here
4	2.1.2.1	Text here	Trainee	mm/dd/20XX	mm/dd/20XX	Text here
1	3	Stage 3	Text here			
2	3.1	Submission and evaluation	Text here	mm/dd/20XX	mm/dd/20XX	Text here
3	3.1.1	Supplier selection	Sr. Manager	mm/dd/20XX	mm/dd/20XX	Text here
4	3.1.1.1	Text here	Manager	mm/dd/20XX	mm/dd/20XX	Text here
2	3.2	Text here	Text here	mm/dd/20XX	mm/dd/20XX	Text here
3	3.2.1	Text here	Sr. Manager	mm/dd/20XX	mm/dd/20XX	Text here
4	3.2.1.1	Text here	Manager	mm/dd/20XX	mm/dd/20XX	Text here

[CLICK HERE TO DOWNLOAD THIS TEMPLATE IN EDITABLE PPT FORMAT](#)

A work breakdown structure is the foundation of project planning. It is a deliverable-oriented hierarchical decomposition of the work to be executed by the project team to accomplish the project objectives and create the required deliverables.

This following shows the work breakdown structure for project management which covers planning, execution and control, closeout with sub tasks such as creating structure, developing project schedule and plan, conducting Kick-off meeting, etc.





Slide
Team

FAQs on Work Breakdown Structure

1. Where is a work breakdown structure employed?

A work breakdown structure is an essential diagrammatic sketch that underlines project components and resources. It also specifies the estimated budget and timeline for overall project completion. Whether it is software development, any construction activity, or event management, a work breakdown structure simplifies the variables and enlists all players in any project activity. This ensures right coordination is developed and projects are executed within the defined timelines.

2. What are the steps involved in creating a work breakdown structure?

A work breakdown structure as the name suggests involves assembling all core elements, referred to as the deliverables. A flowchart structure is the highlight when we attempt this scientific exercise, with the project objective one of the top objectives that branches out into major project deliverables down to the individual or team work packages. In this way, a project manager ensures that no task is left undone and every sub-objective is met, right up to the day of the completion of the project. Believe us, this is a fantastic way to execute projects.

[CLICK HERE TO DOWNLOAD THIS TEMPLATE IN EDITABLE PPT FORMAT](#)

3. How many levels make up a work breakdown structure?

A work breakdown structure can have upto 12 levels as seen in a top construction project. A software project, on the other hand, can branch out up to four levels. The more extensive the branching, the more closely the project monitoring happens. This also impacts the resources needed and the manpower required. However, most projects have three levels and the number may increase depending on the complexity of the project under consideration.

4. What are the approaches one can take in developing work breakdown structures?

Some approaches used in developing work breakdown structures are:

- Component approach: Here the components of any project are highlighted and their interconnection and hierarchy developed further. For e.g. manufacturing automobiles, or their components, etc.
- Phasing approach: Here is a great method for devising a work breakdown structure in a software development activity. By identifying the phases and the sub-phases, you ensure a smooth process flow.
- Functional use approach: When a project involves departments with inter-connected responsibilities, a functional approach is best in framing its ideal work breakdown structure. In this method, branching identifies core areas such as sales, marketing, research and development, etc, that have to perform in close coordination to deliver the project objective.



Welcome to SlideTeam

SlideTeam is a premier Research, Consulting and Design agency that develops and templatizes industry processes and best practices, frameworks and models across all industry and verticals to help customers present their strategies effectively and convincingly.

In addition, SlideTeam compiles data and statistics from thousands of sources over a wide range of topics to help customers make intelligent decisions. We develop and present our research in the form of fully editable PowerPoint templates to make it easy for our customers to create presentations based on their individual requirements.

With a large team comprising of Research Analysts, Statisticians, Industry Experts and Designers spread over 6 countries, SlideTeam now hosts the world's largest collection of Ready to Use PowerPoint templates on all topics and industries. Our team consists of professionals from Fortune 500 companies and Top Tier consulting firms involved in the process of researching and designing over a million slides that are available for our users on a subscription basis.

To Contact Us and set up a Live Product Demo join us [here](#)